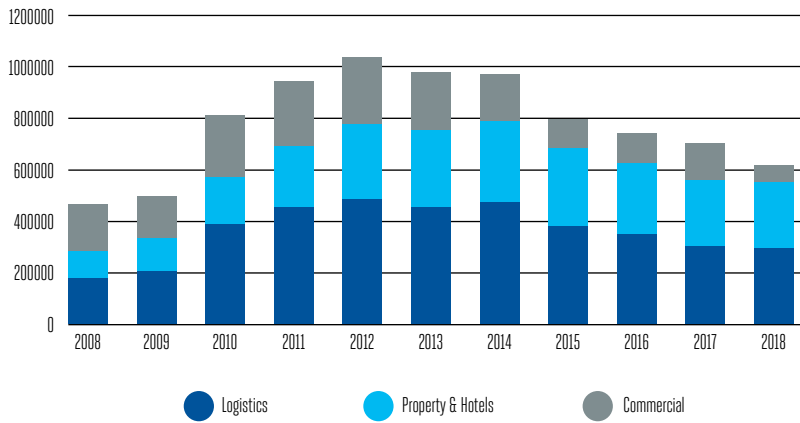


FAST FACTS 2019

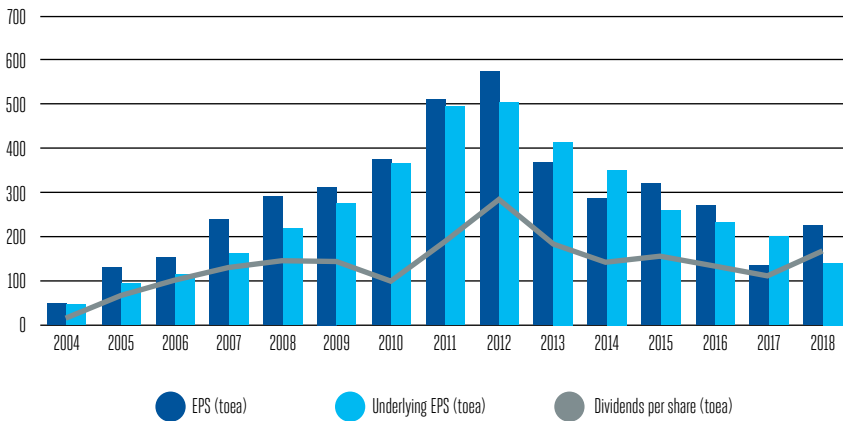


STEAMSHIPS

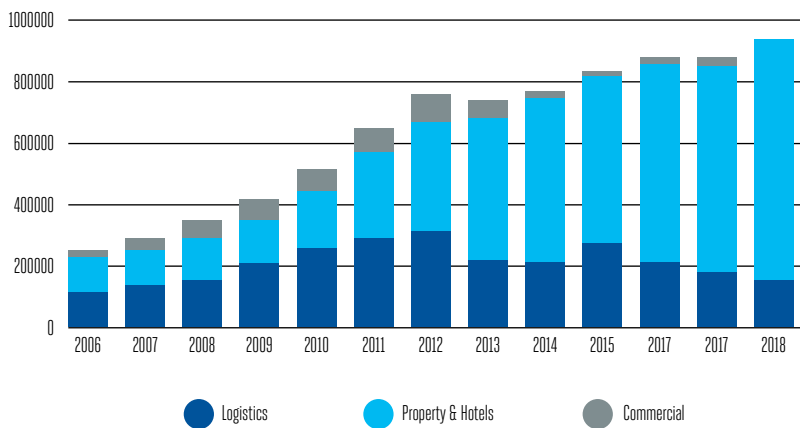
Turnover K'000



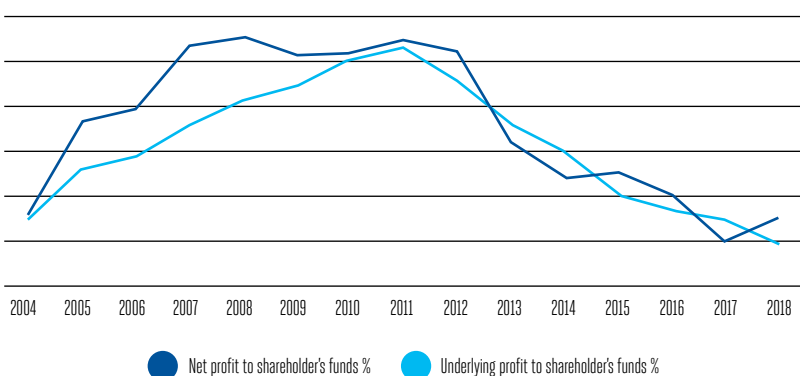
Earnings and Dividends: Toea



Net Assets Employed K'000



Return to Shareholders



100 years old, Steamships Trading Company Limited (Steamships) has a long history in Papua New Guinea and is one of the country's leading businesses. Today Steamships is a well-established business conglomerate with diverse commercial interests and listings on both the Australian and Port Moresby Stock Exchanges.

Steamships employs just over 2,500 Papua New Guinean citizens and non-citizens in six diverse divisions grouped under the three operating categories of Logistics, Property and Commercial. In the area of Logistics, Consort Express Lines provide short and long term vessel charters and the most comprehensive network of scheduled liner shipping services in PNG. In addition Pacific Towing is the leading provider of harbor towage and mooring services in the country, as well as a multifaceted transport and logistics service providers East West Transport and JV Ports Limited.

The company's property division, Pacific Palms Property, is one of the largest and most dynamic property developers and real estate operations in PNG with residential, commercial, retail and industrial assets throughout the country.

The Group's property portfolio also consists of the largest hotel chain, Coral Sea Hotels in PNG, offering hotel rooms and apartments across 4 main locations.

“The company's property division, Pacific Palms Property, is one of the largest and most dynamic property developers and real estate operators in PNG with residential, commercial, retail and industrial assets throughout the country.”

HOTELS & PROPERTIES

Coral Sea Hotels

Coral Sea Hotels operates the largest group of hotels in Papua New Guinea with seven properties offering full hotel facilities and serviced apartments with varied dining options as well as wide-ranging meeting, conference and banqueting facilities. Our award winning hotels are the perfect choice for the business or leisure traveller, providing comfortable short-

and long term accommodation in a friendly and secure environment. For business or pleasure, Coral Sea Hotels are conveniently located throughout the country in key cities including Port Moresby, Mt Hagen, Lae, Goroka and Kiunga. An opportunity to explore and experience unique Papua New Guinea culture awaits.



The Grand Papua is a world class, luxury hotel located in the heart of Port Moresby's CBD.



One of the recently refurbished rooms at the Ela Beach Hotel.



Enjoy dining at Gateway Hotel's Jackson's Bar and Restaurant.

Pacific Palms Properties

Pacific Palms Property is the largest property developer and owner in Papua New Guinea with two separate streams of business activity.

The development team manages land acquisition, investment assessment and and construction management, while the lettings team manages marketing, tenant placements, rental collections and maintenance.

Pacific Palms Property has delivered some of PNG's most progressive commercial developments, including the iconic Port Moresby Harbourside Development, Gordons Business Center and Waigani Central Estate and world-class hotels and venues including Grand Papua Hotel, Jacksons Bar & Gaming, Enzo's Takeaway and Sizzlers Family Restaurant at Gateway, innovative Serviced Offices

at Harbourside and, coming soon, Harbourside South, a mixed use building comprising commercial office floors, a boutique retail arcade, serviceable apartments and a resort style fitness and leisure floor.



Harbourside Development provides five restaurants and a cafe offering Asian cuisine to Italian and Port Moresby's best views. Pacific Palms Property maintains office spaces for lease to both short and long term tenants.

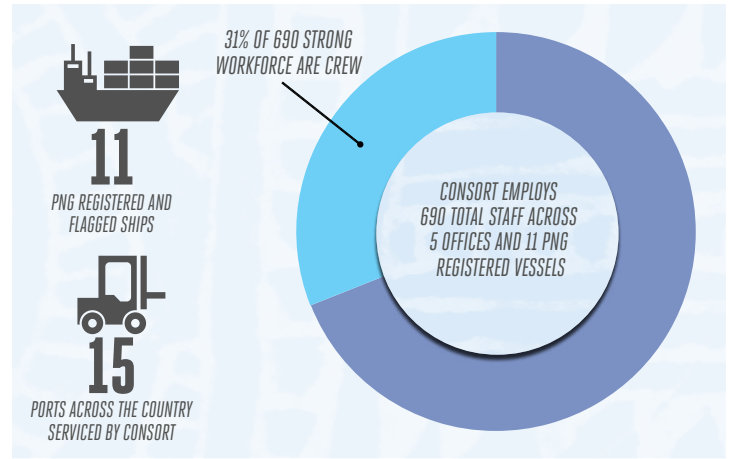
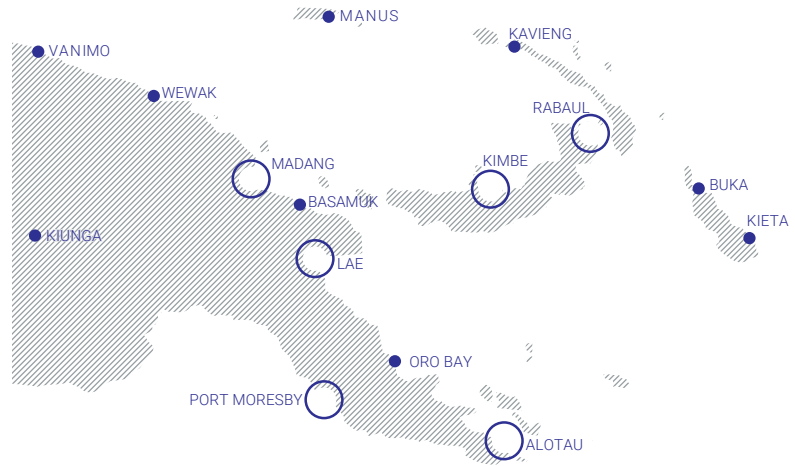
Major Property Portfolio (as at December 31 2018)

Category	Total Area (m ²)
Commercial	50,512
Industrial	171,289
Residential	169 units
Retail	39,919
Total	243,720

MARINE SERVICES

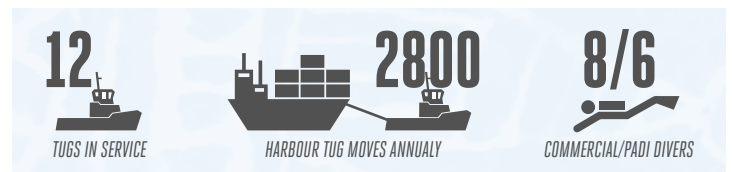
Consort Express Lines

Consort operates 11 vessels in PNG providing the most comprehensive coastal shipping service in the country. All vessels are registered and flagged in PNG and manned by Papua New Guineans. Of a total workforce of 690 staff, 270 are crew, the majority of whom have been trained at the Madang Maritime College as Consort cadets. Consort's Liner service offers weekly and fortnightly calls into 15 ports around the country and has a fleet of over 6,000 containers. Consort has five offices in PNG and operates a modern fleet of landing craft designed for riverine operations in support of mining and other development projects. In support of its shipping services Consort has stevedoring and transport services as well as bonded yards and freight consolidation capabilities.



Pacific Towing

Performing over 5,000 ship assists a year in Papua New Guinea and the Solomon Islands, Pacific Towing ensures safe and uninterrupted access to the nation's harbours and terminals for both coastal and international shipping around the clock. Pacific Towing's tugs also offer a short sea coastal towage service within PNG waters, including a shallow water capability for river services and estuarine services and our operating locations at PNG's major ports offer improved availability of services on demand to and from anywhere on the PNG coast. A tradition of professional seamanship and well-maintained vessels and equipment, has made Pacific Towing the leading supplier of open water towage services in PNG. With over 150 staff and a record of sustained investment in the PNG maritime industry and with a proud history in the training and development of PNG seafarers at all levels, Pacific Towing's commitment to safety, training and continual improvement ensures that customers can expect professional, reliable & timely services that exceed best practise. Pacific Towing's highly skilled team of commercial divers are experienced in all aspects of undersea work, from class approved in-water surveys to welding & cutting and propeller polishing and repairs and our dedicated team of liferaft technicians service & sell leading brands of liferafts.



TRANSPORT & PORT SERVICES

East West Transport

East West Transport is one of Papua New Guinea's largest multifaceted transport and logistics companies. Based in Port Moresby with significant presences in Lae, Wewak, Madang, Rabaul, Kimbe, Kavieng and Alotau, East West Transport operates across a wide spectrum of transport related activities, including the cartage of bulk fuel, containerized freight, LCL & break bulk cargo and offers depot services such as equipment hire, third party logistics, warehousing and bonded

& unbounded yard storage. East West Transport is an experienced Dangerous Goods logistics provider, providing explosives and fuel logistics to customers like Pioneer DG, Puma, Exxon Mobil and Islands Petroleum.

EWT also offers a licensed customs cargo clearance service in Port Moresby and Lae, working closely with Customs and NAQIA. This unique offering facilitates FAK & General FCL Containers / Bulk Shipments to be removed quickly from



24,000 AVG. ANNUAL CONTAINER UNIT MOVEMENTS FROM POM

the wharf to its bonded sites adding significant cost savings for its clients. Employing over 300 staff across Papua New Guinea, with commitments to training and developing staff to progress within the business, East West Transport strives to provide appropriate skills and knowledge to best serve customers requirements.

East West Transport is an ISO accredited transport provider with ISO 14001 & ISO 18001, accredited in March of 2017.



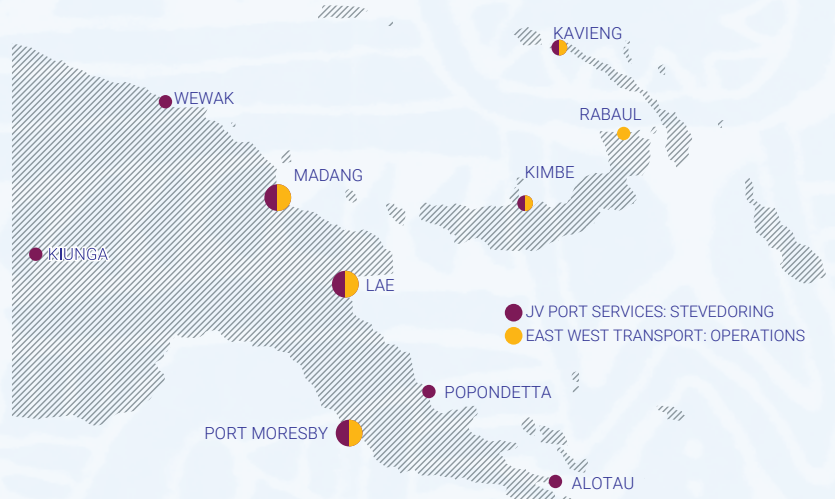
JV Port Services

Through Joint Ventures with more than ten local landowner groups, the JV Port Services (JVPS) businesses offer a full range of stevedoring and handling facilities in the ports of Port Moresby, Lae, Alotau, Oro, Madang, Kimbe, Kavieng and Kiunga. Each joint venture employs a local workforce and is a joint venture equity arrangement with local community partners.

With a fleet of specialist equipment the businesses handle all types of containers, as well as project cargo, breakbulk, RO-RO, LO-LO and grains. Local trucking businesses are also operated at several locations.

The JVPS businesses have increased vessel productivity by up to 100% in the past 5 years, which matches industry best standards for our method of operation and cargo mix. Safety standards are benchmarked against industry best practices and in accordance with AS/NZS standards. JVPS has achieved ISO accreditation for Safety and Environmental standards and will add Quality in 2019.

As part of our commitment to safe and efficient work practices JVPS has our own Registered Training Organisation (RTO) that we train our own staff under, enabling staff access to nationally recognised training. JVPS take our position in the PNG corporate landscape seriously and as part of the Steamships group always strive to ensure the advancement of PNG and its people.



- Stevedoring
- Terminal Services
- Bulk Handling
- Project Cargo
- Transport (Regional)
- Container Services
- Terminal Systems
- Cargo Tracking
- Cargo Washing
- Reefer Monitoring
- Qualified Trainers (AS/NZS)
- RTO Training Provider



SUSTAINABLE DEVELOPMENT

Steamships people are its most critical asset. At Steamships the focus is to ensure that employees are afforded every opportunity to build strong, rewarding and successful careers in an environment of safety, trust, fairness and respect.

In 2017 Steamships HR and Training commenced a journey of revision, with a clear focus on fairness and consistency in people management across all divisions as well as a focus on heightening the professional development of employees at all levels with a “Growth from Within” vision.

A key achievement has been the development of an STC Remuneration Framework which will be applied across all divisions, whilst maintaining flexibility, and acknowledging the diverse industries we are competing with in the labour market. The STC Remuneration Framework and Policy is fair to all employees, competitive against the market, and validated by evaluation and benchmarking.

To support our “Growth from Within” vision, a Learning and Talent Development Manager was sourced

and commenced at the later stage of 2017 to provide support and momentum to a number of conceptual people development initiatives. Steamships Graduate Development Program has been enhanced, Leadership Programs have been sourced and confirmed for implementation in 2018 (two Team Leader Development Programs to be conducted with maximum participation of PNG Citizen employees) and the commencement of the development of a Junior Staff Development Program which will identify, support and development junior employees to gain professional qualification to support them in their current roles, expanding their future opportunities and set them on a path of a long term career with Steamships. This will continue to be supported with our soft skills development programs.

Both of these focus areas will support

Steamships in remaining an employee of choice in PNG as well as supporting employees who possess a good attitude towards their work, who continue to commit to their roles and who have a vision of a long-term career with Steamships. Retention and Growth will continue as a focus for 2018 and beyond.

Building a shared vision for our environment

At Steamships, sustainability is central to everything we do. We believe that our environmental and social performance is as important as our financial performance, as is our duty of care to our staff. By maintaining a clear focus on the three pillars of Our People, Our Environment and Our Community, Steamships remains a major contributor to the economic development of PNG



SUSTAINABLE DEVELOPMENT

and a committed steward of the unique environment and culture of our nation.

The company offers multiple opportunities for professional development for our people, continuing in our mission of providing rewarding and varied careers. Specialised technical training is provided to carefully selected employees of Coral Sea Hotels and Consort Shipping, and our Graduate Management Program Trainees expand their professional experience on a four year program incorporating placements throughout the group. Steamships is regarded across PNG as an attractive place to work.

Safeguarding our environment and minimising the impact of Steamships operations on our natural surroundings remains a focus of paramount importance.

Committed to a better future for PNG

For Steamships, benefitting our communities is central to everything that we do. We strive to ensure our operations provide lasting opportunities for those in the communities in which we operate, and we promote and support better health and education outcomes in remote parts of the country.

Steamships is committed to being an active participant in various community programs, working in collaboration with the PNG Government, local community groups and other private companies to deliver outcomes that benefit not only our Company's bottom line, but all of our lives as well.

We don't just do business in PNG, we call PNG home.

By maintaining a clear focus on the three pillars of *Our People, Our Environment and Our Community*, Steamships remains a major contributor to the economic development of PNG.

Photo courtesy of Sago Network



Photo courtesy of Burnet Institute



Photo courtesy of Kokoda Track Foundation

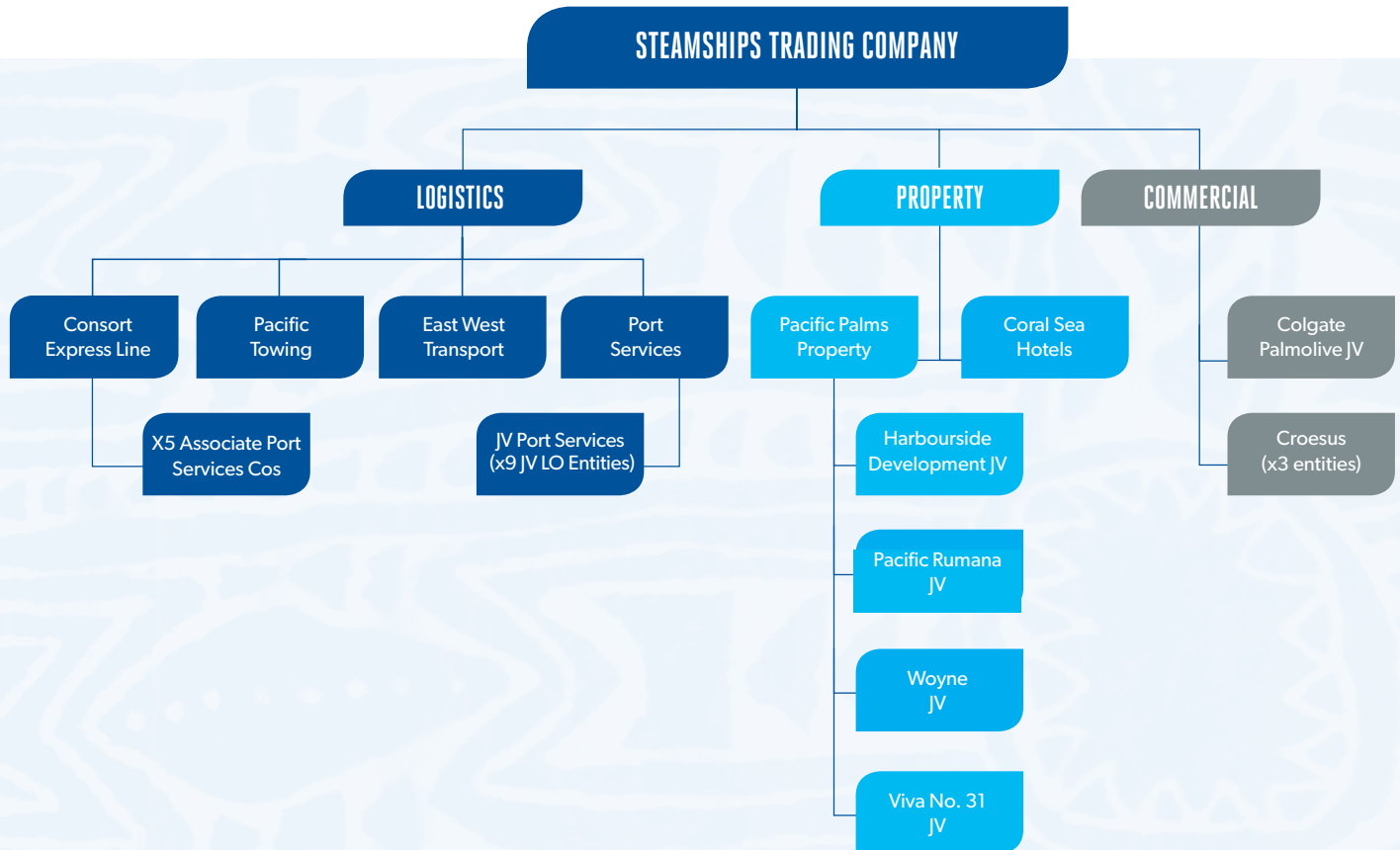


Photo courtesy of Kokoda Track Foundation

WE ARE STEAMSHIPS

Papua New Guinea's pioneering conglomerate in shipping, logistics, property, hotels and commercial for 100 years. Our investment, community engagement and sustainability have endured since 1918.

We're looking forward to seeing what our next century will bring.



Steamships Trading Company Limited

Level 5, Harbourside West,
Stanley Esplanade,
Port Moresby, NCD 121,
Papua New Guinea
Tel: (675) 313 7400
(675) 7998 7000
www.steamships.com.pg

Consort Express Lines Ltd

Lae Office:
Milfordhaven Road
Section 23 Lot 7,
Lae, Morobe Province
Ph: (675) 478-3032
Fax: (675) 478-2171
Port Moresby Office:
Ph: (675) 321 1288
Fax: (675) 321 1279
www.consort.com.pg

Pacific Towing PNG Ltd

Main Wharf, Port Moresby NCD
Ph: (675) 321 1206 / 321 1278
Fax: (675) 321 1301
www.pacifictowingpng.com

Joint Venture Port Services

Baruni Portion: 1487, Baruni Stage: 2,
Building No: 2, Unit: 2 | PO Box 699,
Port Moresby, NCD 121,
Papua New Guinea
P: +675 3212120

East West Transport

Napa Napa Road, Baruni | PO Box 916,
Port Moresby, NCD 121,
Papua New Guinea
P: +675 3249600

Coral Sea Hotels

Jackson's Parade,
Port Moresby, NCD,
Tel: (675) 327 8141
Fax: (675) 325 3248
www.coralseahotels.com.pg

Pacific Palms Property

Scratchley Road,
Port Moresby, Boroko NCD
P: +675 3212822
www.pacificpalmsproperty.com.pg

